

Absolute

SSP3600-65-A2KL
Ø 65 cm
H min/max 80/150 cm
G9 7 x MAX 40W



PL3600-65-AKD
Ø 65 cm - H 65cm
G9 7 x MAX 40W
■ 20 KG



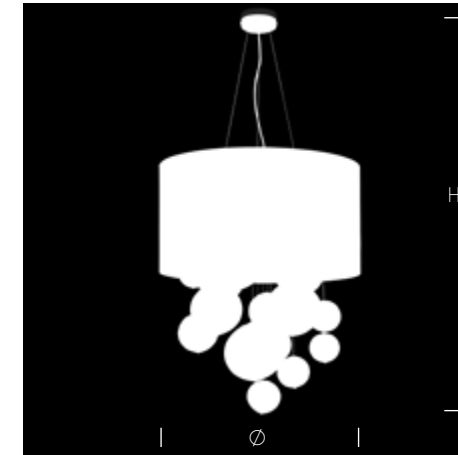
SSP3600-130-A2KV
 Ø 130 cm
 H min/max 100/150 cm
 G9 10 x MAX 40W



Absolute



Technical data



- R Ceiling cup
- C Chain
- H Height
- Ø Diameter
- D Depth
- W Width
- Bulb
- Weight
- Insulation class
- Frame Finishes

Colors

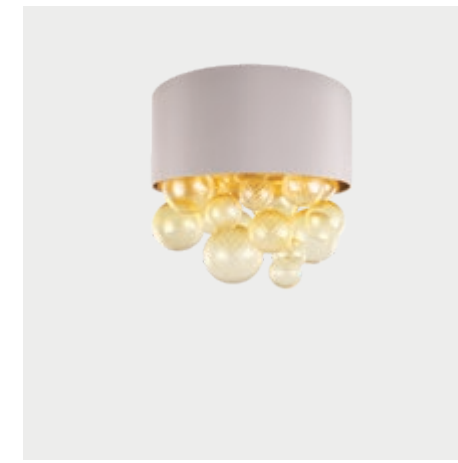
- AKD** Acacia / Gold / Cotton grey
Acacia / Oro / Cotone grigio
- A1KL** Amber / Gold / Cotton brown
Ambra / Oro / Cotone marrone
- A2KV** Tangerine / Gold / Cotton ivory
Mandarino / Oro / Cotone avorio

N polished nickel

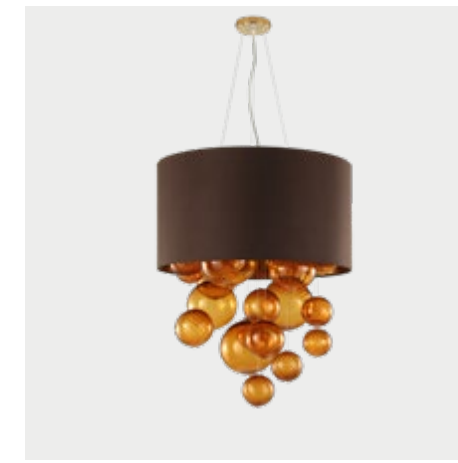
K polished gold

General Specifications

CE IP20 ENEC



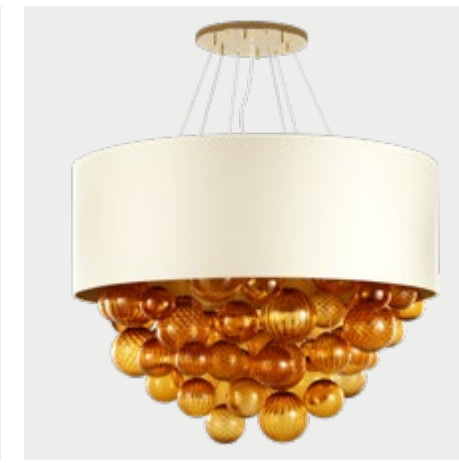
PL3600-65-AKD
 Ø 65cm - H 65 cm
 G9 x 7 MAX 40W 20 KG



SSP3600-65-A2KL
 Ø 65 cm - H min/max 80/150 cm
 G9 x 7 MAX 40W 20 KG



SSP3600-100-A1KL
 Ø 100 cm - H min/max 100/150 cm
 G9 x 10 MAX 40W 35 KG



SSP3600-130-A2KV
 Ø 130 cm - H min/max 100/150 cm
 G9 x 19 MAX 40W 75 KG